

WTAMU Experiential Education Program Fall 2012 Executive Summary

The Experiential Education program (formerly Cooperative Education) began in the spring of 1994. A Title VIII Department of Education grant started the program, and we placed the first students in the spring of 1994. Our vital statistics to date include:

- Monitored 2,252 individual placements to date (44 in Fall 2012)
- Placed 1,111 students in internships (unduplicated count)
- Average GPA of the Fall 2012 class – 3.18
- Average wage for paid internships for the Fall 2012 class - \$12.37 per hour
- Total dollars earned by the Fall 2012 class - \$161,698
- Total dollars earned by all internship students to date - \$8,505,941

For the academic year to date, the Experiential Education & Career Services program helped 713 students through both online and in-person résumé workshops. Additionally, our counselors have provided career counseling to 183 students. This counseling and guidance helps students determine their best career path.

What Did You Like Most? What Was Most Valuable?

“Getting to work under reporters, both experienced veterans and ones who recently graduated. They taught me so much.”

*Maddisum Fowler
Mass Communications Major
KAMR NBC 4—Amarillo, TX*

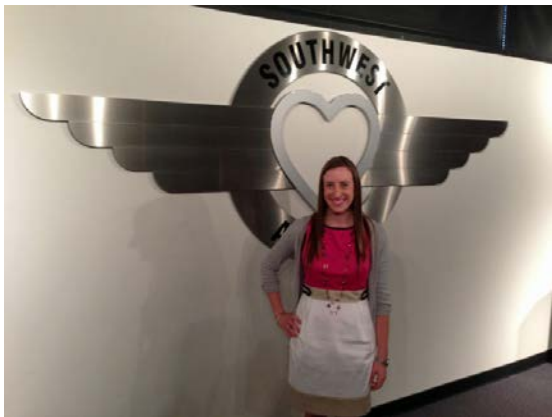


“I feel like this experience helped me develop professionally and improved my leadership, communication, and decision making skills.”

*Heaven Swanson
Accounting Major
Borger News Herald—Borger, TX*

"I like to audio. But I also got to work in the bookstore. My favorite part is watching something I produced put into someone else's hands. The most valuable part was understanding different audio software and how each are similar yet different."

Sabrina Meck
Mass Communications Major
Trinity Fellowship Church—Amarillo, TX

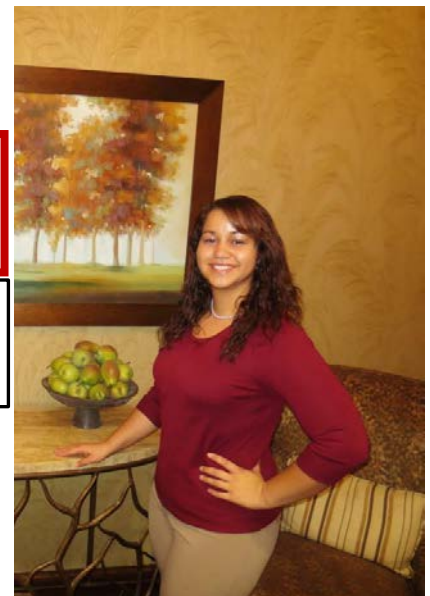


"I really enjoyed that I was given meaningful and challenging assignments. Also, I learned how to manage my time in a professional workplace environment."

Stacy Saultz
Mass Communications Major
Southwest Airlines—Dallas, TX

I gained a better understanding of the profession and got a better grasp on the entire audit process.

Alexandra Long
Accounting Major
Brown, Graham & Co.—Amarillo, TX



Internship Partners- Fall 2012



Amarillo Business Concepts



Attebury Grain, LLC



Borger News-Herald

Brown Graham & Company, P.C.





Coyote Bluff Café



HOYL FINANCIAL GROUP, LLC

STEVE THE IRA GUY



KAMR/KCIT/KCPN



KVII TV



Ogallala Commons

**Permian Chevrolet BUICK GMC Cadillac
Nissan**

Raw Entertainment





**USDA-ARS, Conservation & Production
Research Lab (Bushland)**



West Texas A&M University

Intern to Full-Time for Fall 2012

This semester 14 out of our 44 interns graduated and either took a full-time position, went to graduate school, or are seeking employment. One student is not seeking employment at this time and two we were unable to contact after numerous attempts. All of these students are listed on the chart below.

Of these students, 5 (36%) have full-time jobs, 4 (29%) are still seeking, 1 (7%) isn't actively seeking, 1 we were unable to contact (7%) and 3 (21%) are pursuing graduate school.

Graduate/Student	Major	Intern Employer	Current Status
Armendariz, Nancy	Finance	Bank of America	Still seeking
Bauer-Herzog, Melissa	Mass Communications	U.S. Equestrian Foundation	Ft with The Jockey Club
Bustamante, Robert	Mass Communications	Raw Entertainment	Not seeking at this time
Davidson, Amanda	Accounting	WTAMU Business Office	Seeking
Escamilla, Adriana	Accounting	Kile & Co. PC	FT with Brown Graham & Co., PC
Fowler, Maddisun	Mass Communications	KAMR/KCIT/KCPN	Seeking
Grazier, Morgan	General Business	United Way	Seeking
Horton, Katie	Mass Communications	Permian Chevrolet BUICK GMC Cadillac Nissan	Unable to contact after numerous attempts
Martin, Stacy	Accounting	Hoyl Financial Group	FT with Hoyl Financial Group
Abel Olivas	CIS	Computer Services Inc. (CSI)	FT with Computer Services Inc. (CSI)
Pacheco, John-Paul	General Business	Coyote Bluff Café	Graduate school
Matthew Poston	Finance	City of Amarillo	Graduate school
Heaven Swanson	Accounting	Borger News herald	Graduate school
Shay Ward	Communication	Sakura	FT with Exeter Finance

Participating Employers

The full list of employers we have worked with are online at <http://www.wtamu.edu/student-support/cs-emp-participating-employers.aspx>

Fall 2012 Interns

18% (8) - Graduated and Secured FT Employment/Grad School

63% of these students have full-time positions

37% of these students are pursuing graduate school

34% (15) - Continuing Their Internship

9% (4) - Seeking Full-time Job

39% (17) Seeking Another Internship and/or Pursuing Degree Full-Time

Internships continue to be an effective way for students to gain major-related experience and in many cases, a professional position upon graduation!